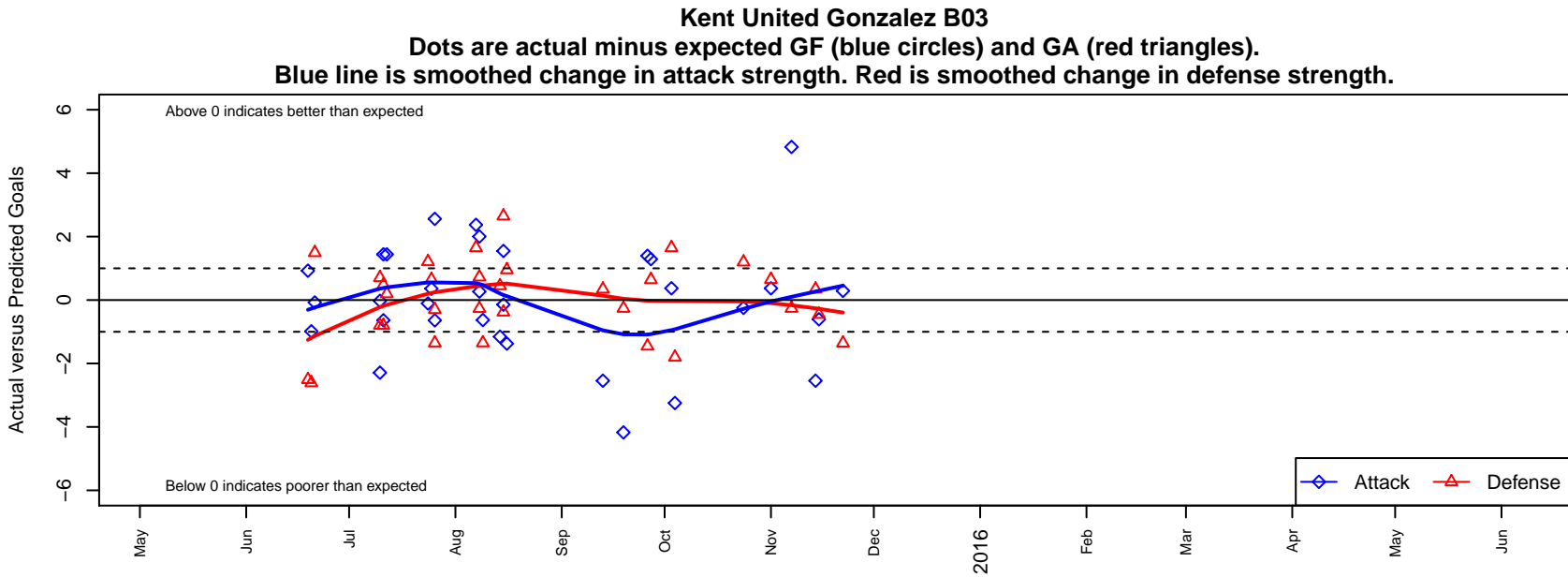


Kent United Gonzalez B03

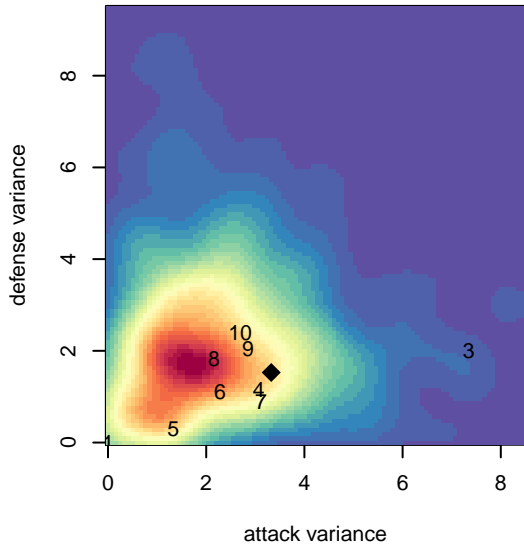
Kent United
 Kent, WA
 B03 total strength=827
 attack=1.42 defense=0.85
 fall league = PSPL WSPL 2 U12
 notes= Gonzalez 2015

alt names used:
 KENT UNITED GONZALEZ (BU12)
 KU 03 Gonzalez
 Kent United B03 Gonzalez
 Kent United B03 Gonzalez
 KU B03 Gonzalez

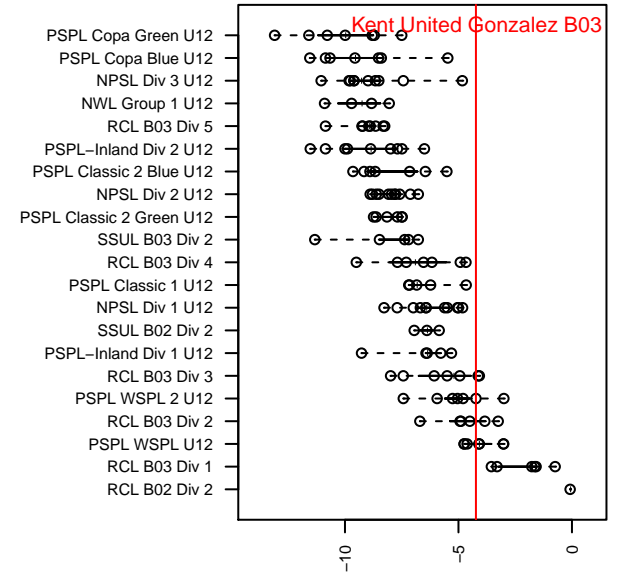
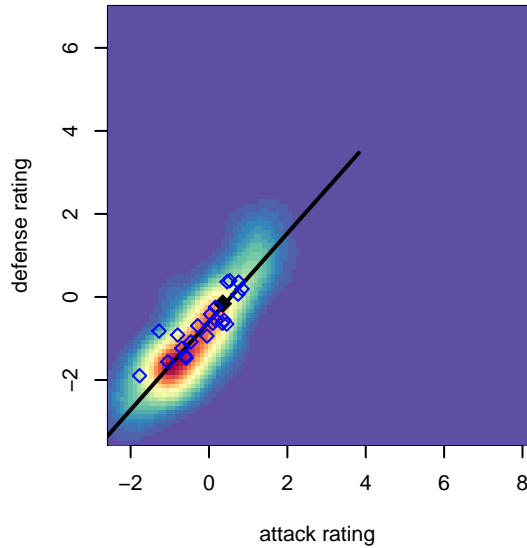
Venues played:
 2015 Snohomish United Invit Gold
 2015 KCC BU12 Gold
 2015 Sounders FC Cup BU12 Gold
 2015 Blast Off BU12 A
 2015 Mt Hood Challenge U13
 2015 PSPL WSPL 2 U12



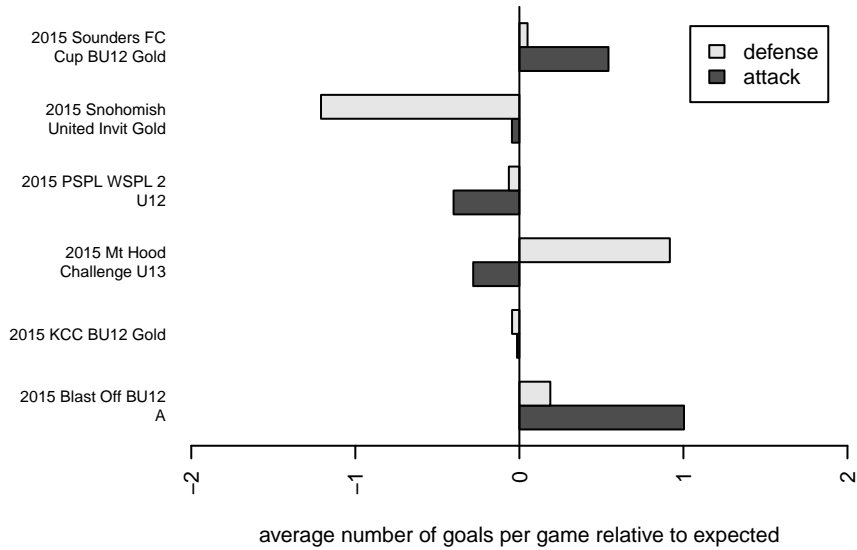
**attack and defense variance (black dot)
relative to other teams
and top 10 in region**



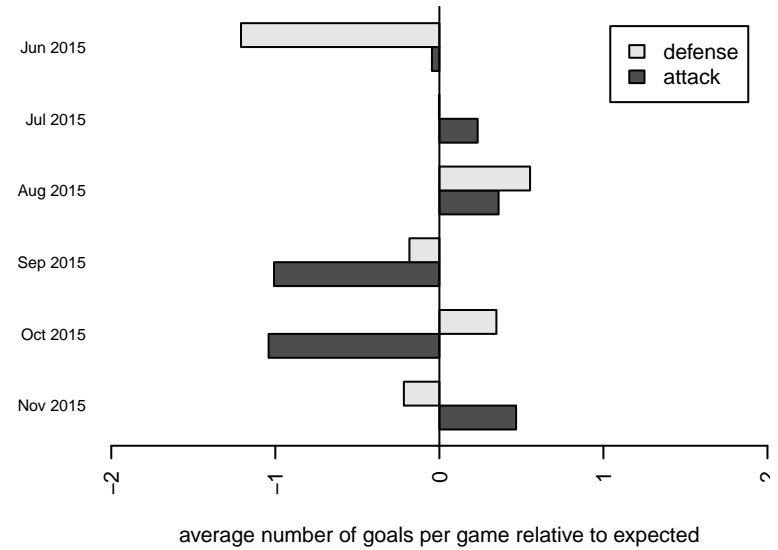
**attack and defense rating
relative to others at age
and all opponents in last 13 months**



Performance relative to 13 month average



Performance relative to 13 month average



date	home		away		venue	pred.home	pred.away
2015-11-22	FPSC Fury Black B03	3	Kent United Gonzalez B03	3	2015 PSPL WSPL 2 U12	1.64	2.71
2015-11-15	Kent United Gonzalez B03	2	Emerald City FC Green B03	2	2015 PSPL WSPL 2 U12	2.61	1.55
2015-11-14	Pumas 04 UNAM B03	1	Kent United Gonzalez B03	0	2015 PSPL WSPL 2 U12	1.34	2.54
2015-11-07	Kent United Gonzalez B03	11	West Narrows Blue B03	1	2015 PSPL WSPL 2 U12	6.17	0.74
2015-11-01	Central WA SA Grey B03	2	Kent United Gonzalez B03	2	2015 PSPL WSPL 2 U12	2.65	1.63
2015-10-24	Pacific FC Real Blue B03	0	Kent United Gonzalez B03	3	2015 PSPL WSPL 2 U12	1.20	3.25
2015-10-04	Kent United Gonzalez B03	0	Pacific FC Real Blue B03	3	2015 PSPL WSPL 2 U12	3.25	1.20
2015-10-03	Kent United Gonzalez B03	2	Central WA SA Grey B03	1	2015 PSPL WSPL 2 U12	1.63	2.65
2015-09-27	Kent United Gonzalez B03	4	FPSC Fury Black B03	1	2015 PSPL WSPL 2 U12	2.71	1.64
2015-09-26	Emerald City FC Green B03	3	Kent United Gonzalez B03	4	2015 PSPL WSPL 2 U12	1.55	2.61
2015-09-19	West Narrows Blue B03	1	Kent United Gonzalez B03	2	2015 PSPL WSPL 2 U12	0.74	6.17
2015-09-13	Kent United Gonzalez B03	0	Pumas 04 UNAM B03	1	2015 PSPL WSPL 2 U12	2.54	1.34
2015-08-16	ETFC Dortmund Red B02	0	Kent United Gonzalez B03	1	2015 Mt Hood Challenge U13	0.95	2.37
2015-08-15	Foothills SC Celtic White B02	1	Kent United Gonzalez B03	6	2015 Mt Hood Challenge U13	0.62	6.14
2015-08-15	PacNW White B02	0	Kent United Gonzalez B03	3	2015 Mt Hood Challenge U13	2.65	1.45
2015-08-14	WUSC Manchester United White 2 B02	0	Kent United Gonzalez B03	2	2015 Mt Hood Challenge U13	0.45	3.15
2015-08-09	Central WA SA Grey B03	4	Kent United Gonzalez B03	1	2015 Blast Off BU12 A	2.65	1.63
2015-08-08	Kent United Gonzalez B03	6	Nortac Sparta Red B03	1	2015 Blast Off BU12 A	5.73	0.73
2015-08-08	FWFC Blue B03	0	Kent United Gonzalez B03	6	2015 Blast Off BU12 A	0.72	4.00
2015-08-07	Kent United Gonzalez B03	4	Central WA SA Grey B03	1	2015 Blast Off BU12 A	1.63	2.65
2015-07-26	Central WA SA Navy B03	2	Kent United Gonzalez B03	5	2015 Sounders FC Cup BU12 Gold	1.70	2.44
2015-07-26	3 Rivers Green B03	3	Kent United Gonzalez B03	2	2015 Sounders FC Cup BU12 Gold	1.65	2.64
2015-07-25	3 Rivers Green B03	1	Kent United Gonzalez B03	3	2015 Sounders FC Cup BU12 Gold	1.65	2.64
2015-07-24	Kent United Gonzalez B03	2	MVP Rapids Navy B03	0	2015 Sounders FC Cup BU12 Gold	2.11	1.21
2015-07-12	Kent United Gonzalez B03	4	NSC Galaxy B03	1	2015 KCC BU12 Gold	2.56	1.20
2015-07-11	Kent United Gonzalez B03	4	NSC Galaxy B03	2	2015 KCC BU12 Gold	2.56	1.20
2015-07-11	Kent United Green B03	0	Kent United Gonzalez B03	3	2015 KCC BU12 Gold	0.48	3.64
2015-07-10	Kent United Gonzalez B03	5	Eastside FC Grey B03	0	2015 KCC BU12 Gold	5.03	0.70

date	home		away		venue	pred.home	pred.away
2015-07-10	Southlake Select Eagles Red B03	1	Kent United Gonzalez B03	7	2015 KCC BU12 Gold	0.20	9.29
2015-06-21	Kent United Gonzalez B03	1	Snohomish United Black B03	0	2015 Snohomish United Invit Gold	1.08	1.49
2015-06-20	Kent United Gonzalez B03	0	Crossfire Premier A B04	5	2015 Snohomish United Invit Gold	0.99	2.39
2015-06-19	Kent United Gonzalez B03	2	NWN Red B03	5	2015 Snohomish United Invit Gold	1.07	2.49